

Wiley Park Development

LANDSCAPE WORKS FOR DEVELOPMENT APPLICATION

DRAWING NO.	DRAWING TITLE	SCALE
L00	COVER SHEET	NTS@A1
L01	TREE REMOVAL AND RETENTION PLAN	1:200@A1
L02	LANDSCAPE PLAN - GROUND FLOOR	1:200@A1
L03	PLANTING PLAN - GROUND FLOOR	1:200@A1
L04	LANDSCAPE PLAN - LEVEL 3	1:200@A1
L05	LANDSCAPE PLAN - LEVEL 7	1:200@A1
L06	LANDSCAPE PLAN - ROOF LEVEL	1:200@A1
L07	LANDSCAPE ELEVATION - SOUTHWEST	1:200@A1
L08	PLANTING SPECIES	NTS@A1
L09	LANDSCAPE DETAILS	AS SHOWN@A1
L10	LANDSCAPE DETAILS	AS SHOWN@A1
L11	LANDSCAPE DETAILS	AS SHOWN@A1
L12	MAINTENANCE SCHEDULE	NA
L13	LANDSCAPE SECTION	1:50@A1

EXISTING VEGETATION SCHEDULE

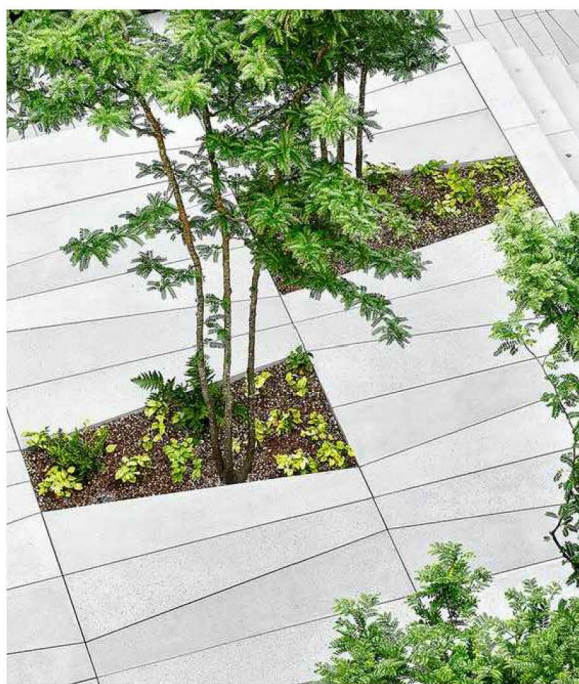
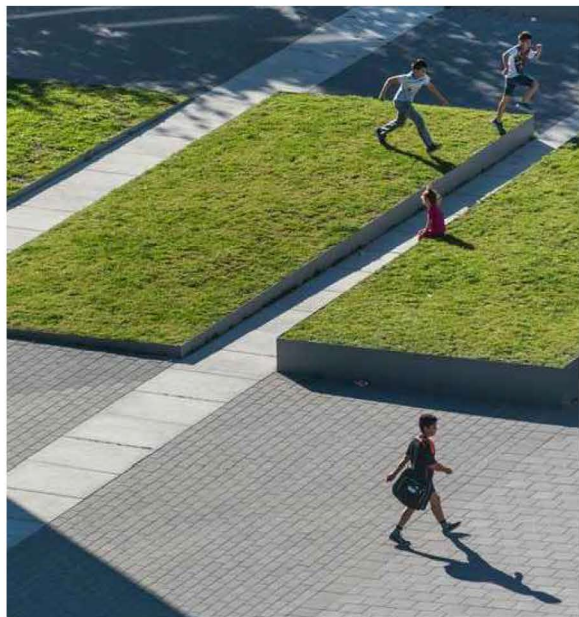
ID	BOTANICAL NAME	COMMON NAME	HEIGHT (m)	TPZ (m)
TREE REMOVED				
T1	Cinnamomum camphora	Camphor laurel	21	13.72
T2	Schefflera actinophylla	Queensland Umbrella Tree	6	3.84
T3	Citrus aurantifolia	Lime Tree	4	3.12
T4	Ligustrum lucidum	Chinese Privet	6.5	N/A
T5	Ligustrum lucidum	Chinese Privet	5	N/A
T6	Ligustrum lucidum	Chinese Privet	6	N/A
T7	Ligustrum lucidum	Chinese Privet	6	N/A
T8	Ligustrum lucidum	Chinese Privet	3	2.4
T9	Cinnamomum camphora	Camphor laurel	9	4.44
T10	Eucalyptus moluccana	Gum-topped Box	14	4.32
T11	Eucalyptus moluccana	Gum-topped Box	24	N/A
T12	Eucalyptus moluccana	Gum-topped Box	22	14.4
T13	Melaleuca linanfolia	Narrow-Leaved Paperbark	12	3.84
T14	Melaleuca linanfolia	Narrow-Leaved Paperbark	11	5.4
T15	Melaleuca linanfolia	Narrow-Leaved Paperbark	8	6
T16	Cinnamomum camphora	Camphor Tree	8	3.36
T17	Morus nigra	Black mulberry	9	2.88
T18	Ficus microcarpa	Ficus microcarpa	3	2
T19	Ficus microcarpa	Ficus microcarpa	3	2
T20	Ficus microcarpa	Ficus microcarpa	3	2
T21	Ficus microcarpa	Ficus microcarpa	9	2

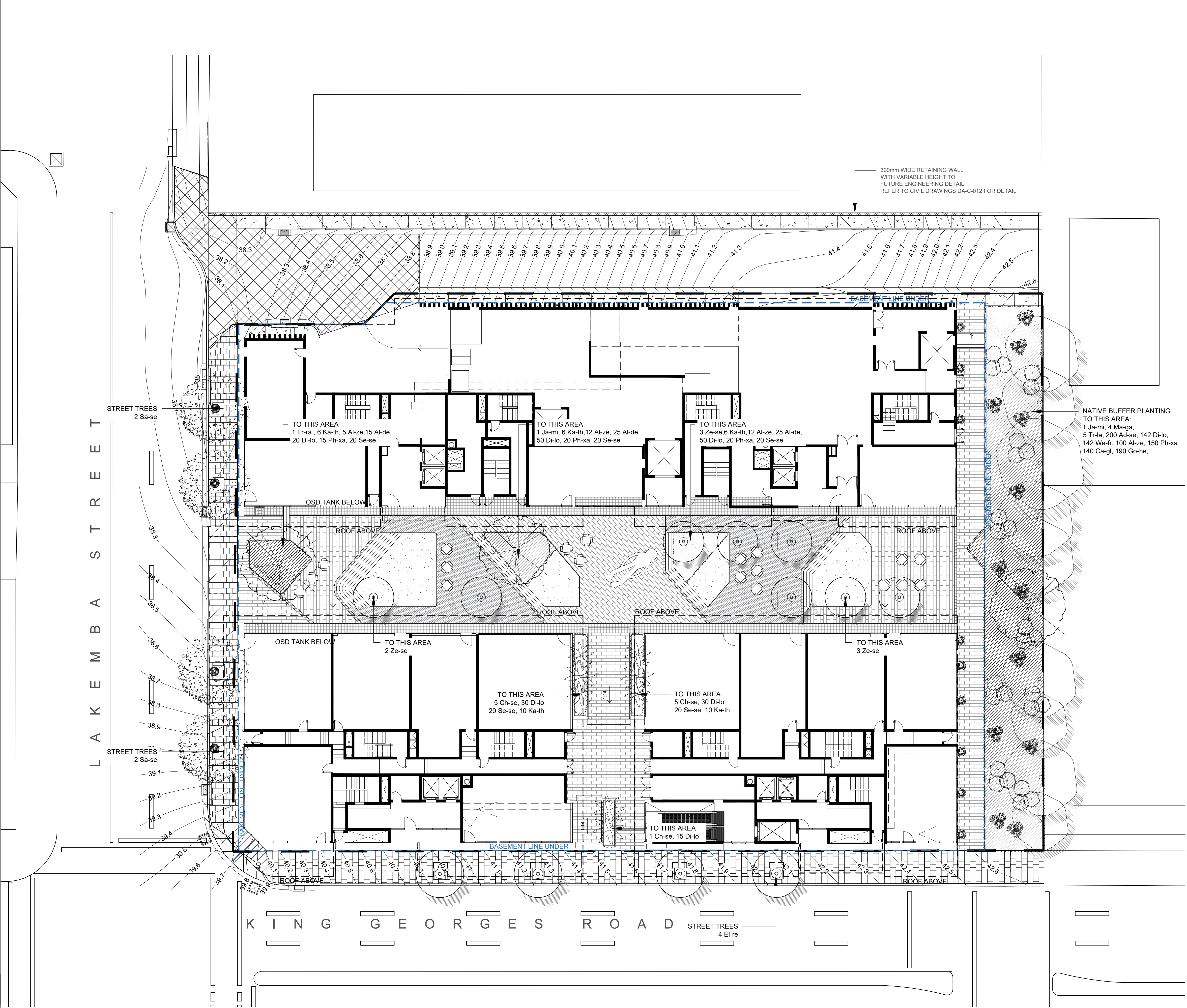


DESIGN NOTES

- 01 Bleacher seating elements with steel edging to retain turf and planting
- 02 Tree grove throughout plaza creates gathering spaces
- 03 Feature trees
- 04 Feature avenue palm planting
- 05 Deep soil buffer
- 06 Deciduous street trees as per Council's requirements
- 07 New signage to Plaza entry
- 09 Paving and street trees to public domain as per City of Canterbury Council DCP

CHARACTER IMAGES





GROUND FLOOR					
ID	BOTANICAL NAME	COMMON NAME	HEIGHT (m)	POT SIZE	QTY
TREES					
Tr-la	<i>Tristanopsis laurina</i>	Water Gum	10m	100L	5
Ch-se	<i>Chamaedorea seifrizii</i>	Bamboo Palm	3m	75L	10
El-re	<i>Elaeocarpus reticulatus</i>	Blueberry Ash	7-15mm	200L	4
Ja-mi	<i>Jacaranda mimosifolia</i>	Jacaranda	10m	200L	2
Ma-ga	<i>Magnolia grandiflora</i> 'Exmouth'	Bull Bay Magnolia	12m	100L	4
Sa-se	<i>Sapium sebiferum</i>	Chinese tallow	6.5m	200L	4
Ze-se	<i>Zelkova serrata</i>	Japanese zelkova	14m	100L	8
Fr-ra	<i>Fraxinus raywood</i>	Claret ash	8m	200L	1
SHRUBS					
Al-de	<i>Alternanthera dentata</i> "Little Ruby"	Little Ruby	0.5m	300mm	265
Al-ze	<i>Alpinia Zerumbet</i> 'Variegata'	Shell Ginger	1.5m	200mm	139
Di-lo	<i>Dianella longifolia</i>	Flan Lily	1m	200mm	222
Ph-xa	<i>Philodendron</i> 'Xanadu'	Xanadu	0.7m	300mm	205
We-fr	<i>Westringia fruticosa</i>	Coastal Rosemary	2m	200mm	142
GROUNDCOVERS					
Ca-gl	<i>Carpobrotus glaucescens</i>	Pig Face	0.5m	150mm	140
Go-he	<i>Goodenia hederacea</i> var <i>hederacea</i>	Violet Leaved Goodenia	0.2m	150mm	190
Ka-th	<i>Kalanchoe thyrsiflora</i> 'Flapjacks'	Flapjacks	0.3m	150mm	38
Se-se	<i>Senecio serpens</i>	Blue Chalk Sticks	0.2m	200mm	100

LEVEL 3					
ID	BOTANICAL NAME	COMMON NAME	HEIGHT (m)	POT SIZE	QTY
TREES					
El-eu	<i>Elaeocarpus eumundi</i>	Eumundi Quandong	6m	75L	2
SHRUBS					
Al-ru	<i>Alcanthera imperialis 'Rubra'</i>	Bromeliad	2m	300mm	5
Mu-mi	<i>Murraya paniculata 'Mn A Mn'</i>	Dwarf Orange Jasmine	2m	300mm	8
Ph-xa	<i>Philodendron 'Xanadu'</i>	Xanadu	0.7m	300mm	10
GROUNDCOVERS					
Pa-te	<i>Pachysandra terminalis</i>	Japanese Spurge	0.2m	100mm	12
Ca-ci	<i>Casuarina glauca 'cousin it'</i>	Cousin it	0.3m	200mm	30
Tr-ja	<i>Trachospermum jasminoides</i>	Star Jasmine	0.3m	100mm	16

DESIGN NOTES

01 Group of shrubs and groundcover's to 1100mm raised planter

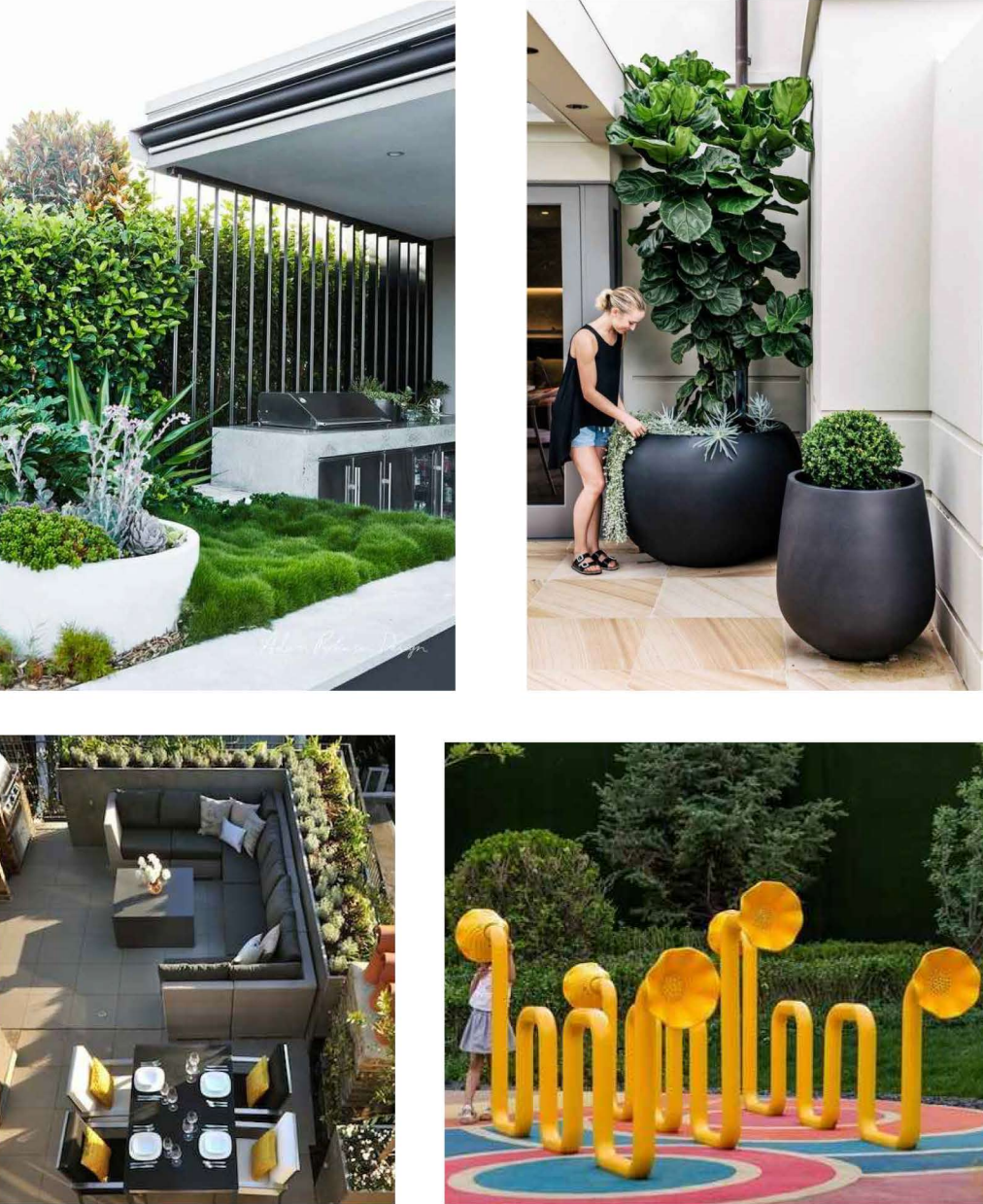


LEVEL 7					
TREES					
Hi-ti	Hibiscus tiliaceus 'Rubra'	Bronze Leaf Hibiscus	3m	100L	2
SHRUBS					
Ag-at	Agave attenuata	Century Plant	1-1.5m	300mm	20
Hy-gn	Hymenosporum Gold Nugget	Native frangipanni	0.6m	300mm	50
St-ju	Strelitzia juncea	Narrow Leafed Bird of Paradise	2m	45L	24
We-fr	Westringia fruticosa	Coastal rosemary	1m	300mm	19
Za-fu	Zamia furfuracea	Cardboard Palm	1m	300mm	4
GROUNDCOVERS					
Ap-co	Aptenia cordifolia	Baby Sun Rose	0.6m	150mm	174
Di-la	Dianella 'Little Jess'	Little Jess	0.3m	150mm	80
Pa-pa	Pandorea pandorana	Wonga Wonga Vine	5m	200mm	15
Ro-of	Rosmarinus officinalis 'Prostrate'	Rosemary	0.2m	150mm	80

DESIGN NOTES

- 01 Canopy / cover to BBQ area
- 02 Seating alcoves
- 03 Planting buffer / wind break
- 04 Children's play area
- 05 Stainless steel creeper frame with planting

CHARACTER IMAGES

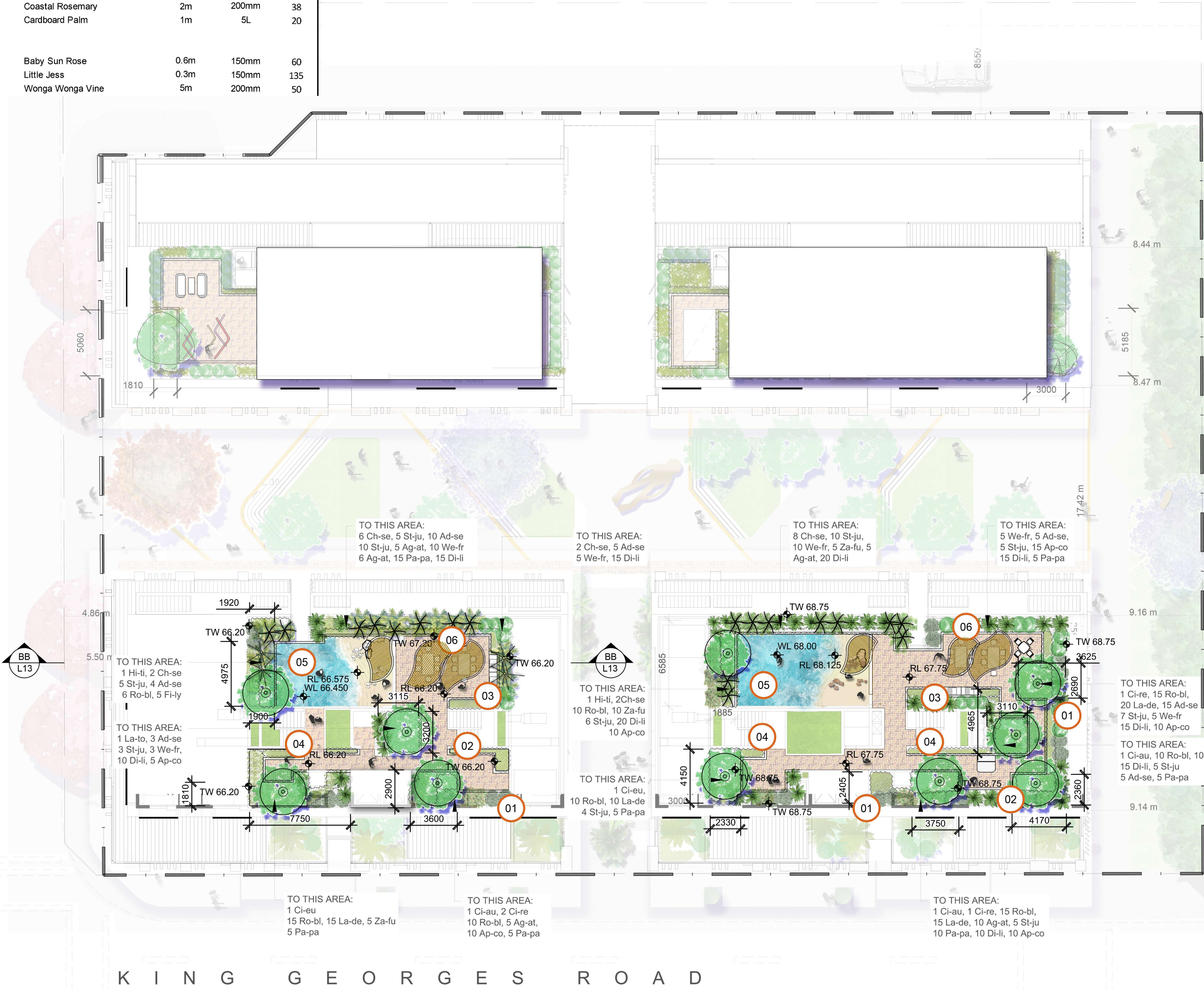


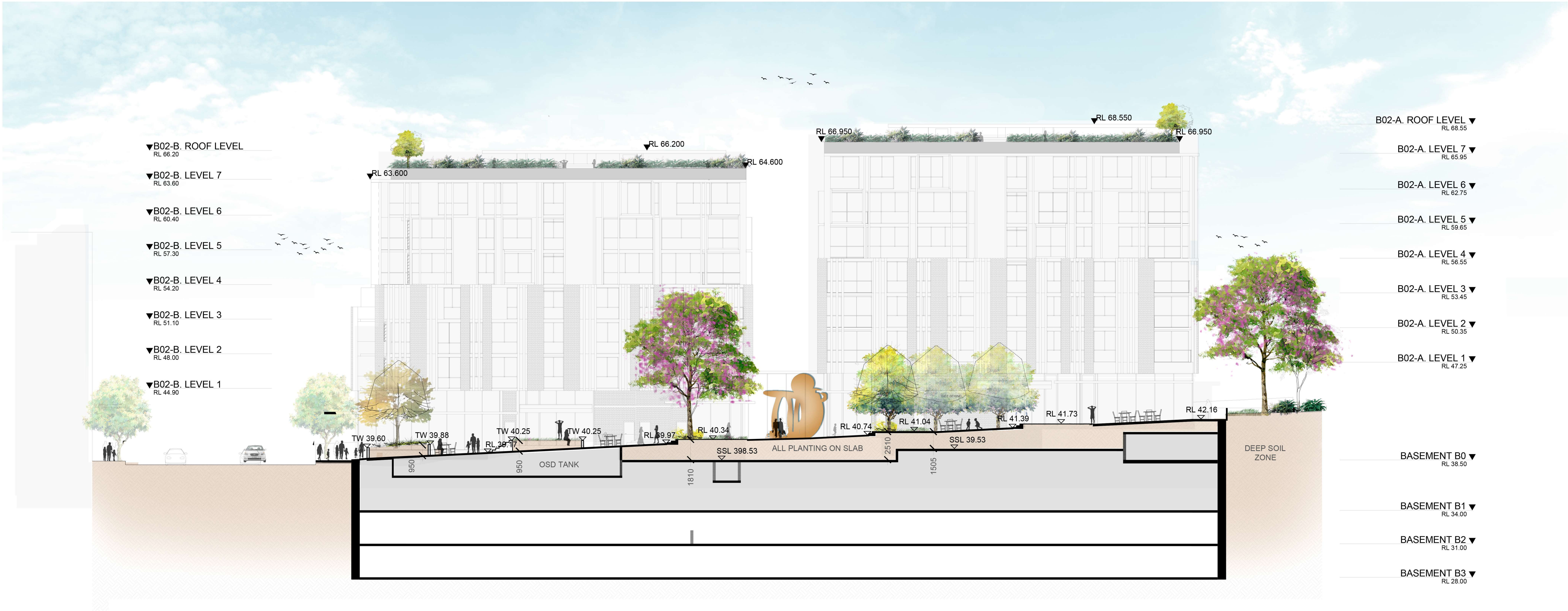
ROOF TERRACE					
ID	BOTANICAL NAME	COMMON NAME	HEIGHT (m)	POT SIZE	QTY
TREES					
Hi-li	<i>Hibiscus tiliaceus</i> 'Rubra'	Bronze Leaf Hibiscus	3m	100L	2
Ch-se	<i>Chamaedorea seifrizii</i>	Bamboo Palm	3m	75L	20
Ci-au	<i>Citrus aurantifolia</i>	Lime	4m	100L	3
Ci-eu	<i>Citrus</i> 'Eureka Lemon'	Lemon	4m	100L	2
Ci-re	<i>Citrus reticulata</i> 'Okitsu Wase'	Dwarf Mandarin	4m	100L	3
La-to	<i>Lagerstroemia tonto</i>	Tonto Crape Myrtle	3m	75L	1
SHRUBS					
Ad-se	<i>Adenanthos sericeus</i> 'Silver Streak'	Woolly Bush	2m	300mm	47
Ag-at	<i>Agave attenuata</i>	Century Plant	1-1.5m	300mm	31
Fi-ly	<i>Ficus lyrata</i>	Fiddle-Leaf Fig	2m	45L	5
La-de	<i>Lavandula dentata</i>	Lavender	1m	300mm	70
Ro-bl	Rosemary 'Blue Lagoon'	Rosemary	1m	300mm	91
St-ju	<i>Strelitzia juncea</i>	Narrow Leafed Bird of Paradise	2m	45L	65
We-fr	<i>Westringia fruticosa</i>	Coastal Rosemary	2m	200mm	38
Za-fu	<i>Zamia furfuracea</i>	Cardboard Palm	1m	5L	20
GROUNDCOVERS					
Ap-co	<i>Aptenia cordifolia</i>	Baby Sun Rose	0.6m	150mm	60
Di-li	<i>Dianella</i> 'Little Jess'	Little Jess	0.3m	150mm	135
Pa-pa	<i>Pandorea pandorana</i>	Wonga Wonga Vine	5m	200mm	50

DESIGN NOTES

- 01
- Sensory garden planting to building perimeter
- 02
- Productive garden with potting bench
- 03
- BBQ & Dining areas
- 04
- Stainless steel creeper frame with planting
- 05
- Mounded water play area with feature sandstone boulders.
max 300mm water depth to future detail
- 06
- Sculptural shade structures with timber and lass infill

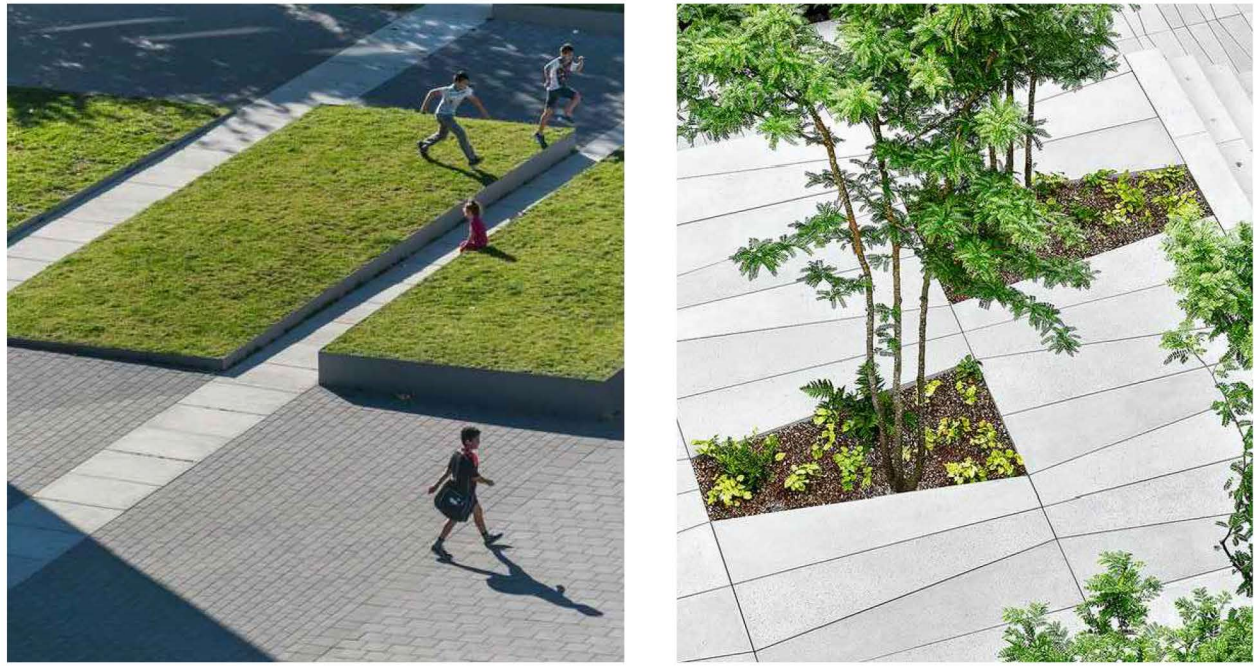
CHARACTER IMAGES





AA ELEVATION - SOUTHWEST
1:200

CHARACTER IMAGES



Trees



Elaeocarpus reticulatus



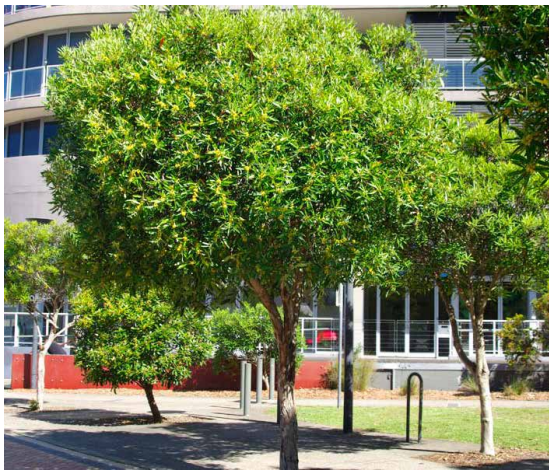
Elaeocarpus eumundi



Jacaranda mimosifolia



Zelkova serrata



Tristaniopsis laurina



Magnolia grandiflora 'Exmouth'



Citrus 'Eureka Lemon'



Citrus aurantifolia



Citrus reticulata 'Okitsu Wase'



Fraxinus raywood



Hibiscus tiliaceus 'Rubra'



Lagerstroemia tonto



Metrosideros thomasi 'Crimson Glory'



Sapium sebiferum

Shrubs



Alcanthera imperialis 'Rubra'



Agave attenuata



Strelitzia juncea



Philodendron 'Xanadu'



Zamia furfuracea



Alternanthera dentata "Little Ruby"



Adenanthos sericeus



Alpinia zerumbet



Chamaedorea seifrizii



Rosemary 'Blue Lagoon'



Nandina 'Lemon Lime'



Murraya paniculata 'Min A Min'



Ficus lyrata



Westringia fruticosa



Hymenosporum flavum 'Gold Nugget'



Dianella longifolia



Lavandula dentata

Groundcovers



Carpobrotus glaucescens



Ophiopogon japonicus



Aptenia cordifolia



Casuarina glauca 'cousin it'



Tracheospermum jasminoides



Pachysandra terminalis



Goodenia hederacea



Kalanchoe thyrsiflora 'Flapjacks'



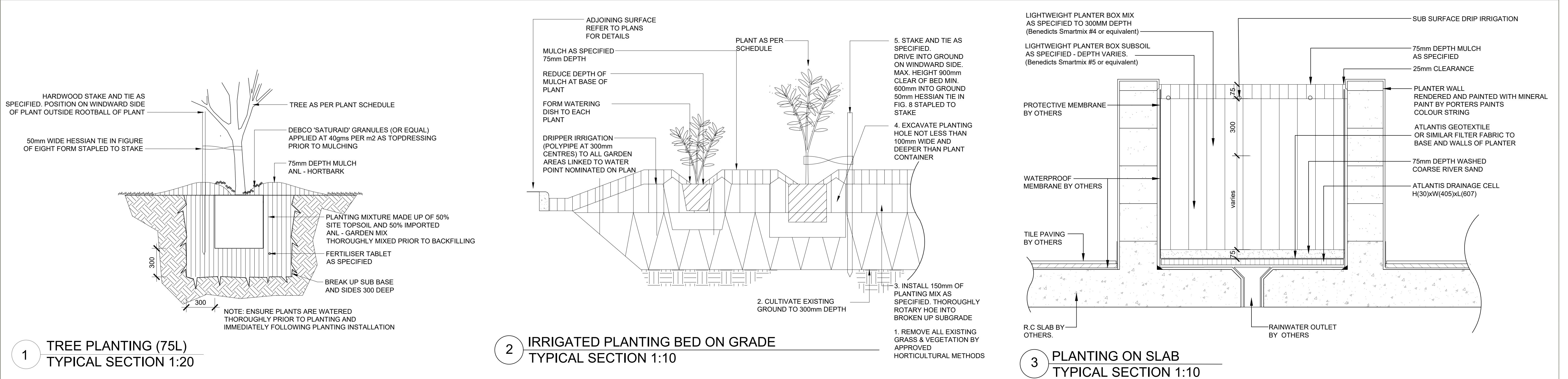
Pandorea pandorana



Senecio serpens

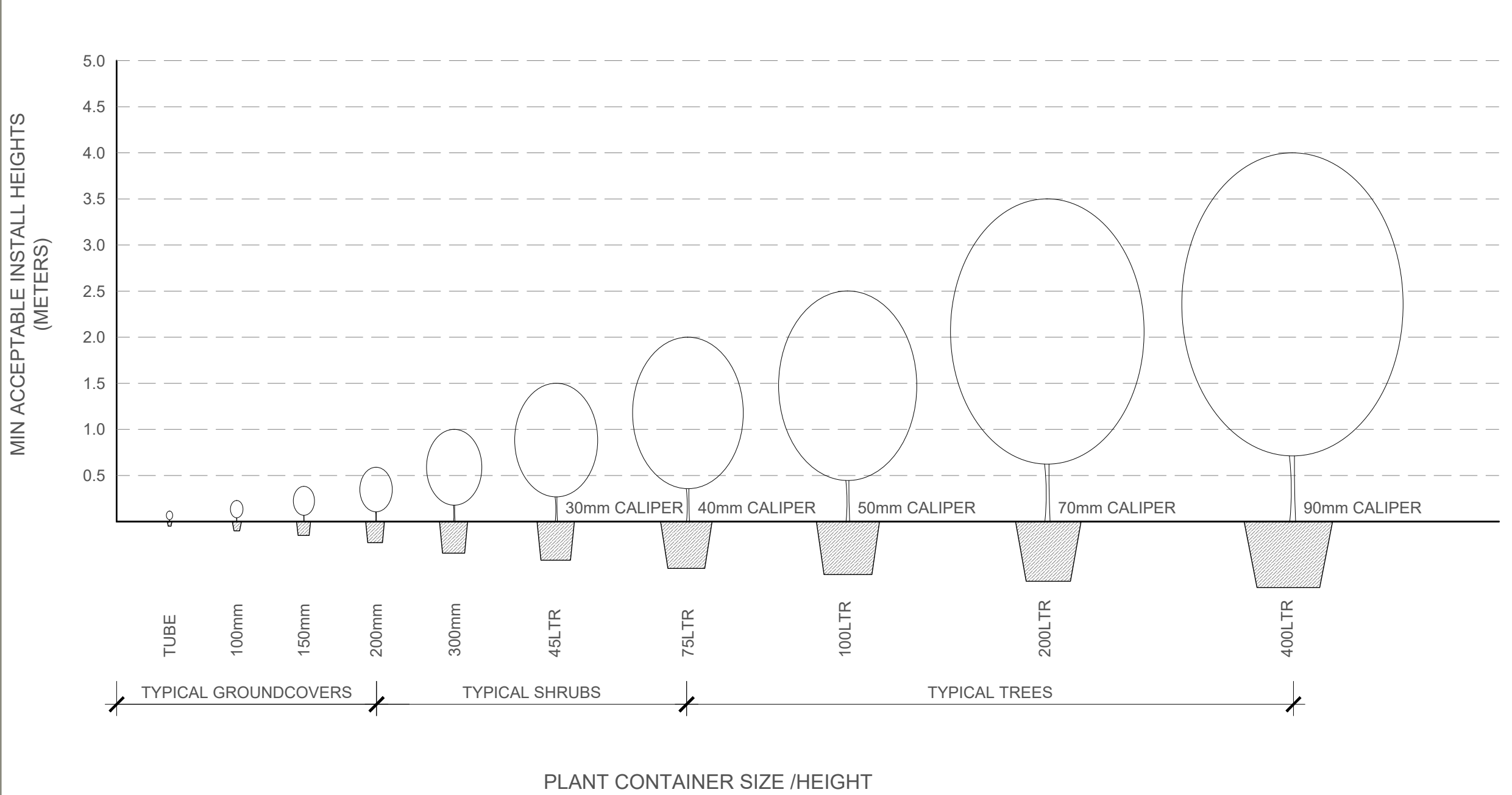
Key

- Evergreen planting
- Seasonal planting/ deciduous
- Evergreen shrubs and groundcovers with seasonal feature

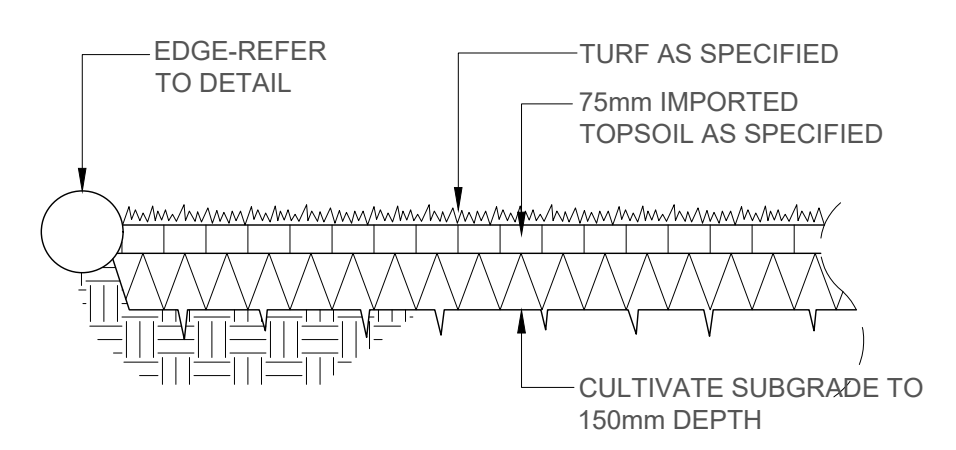
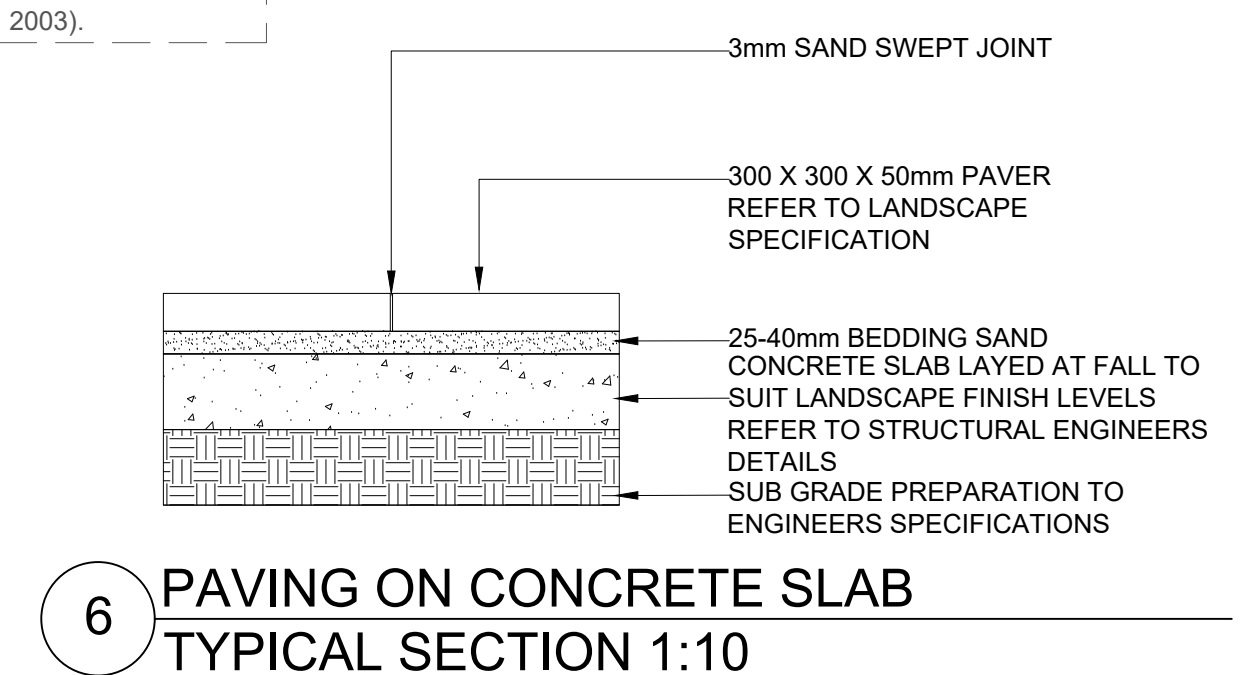
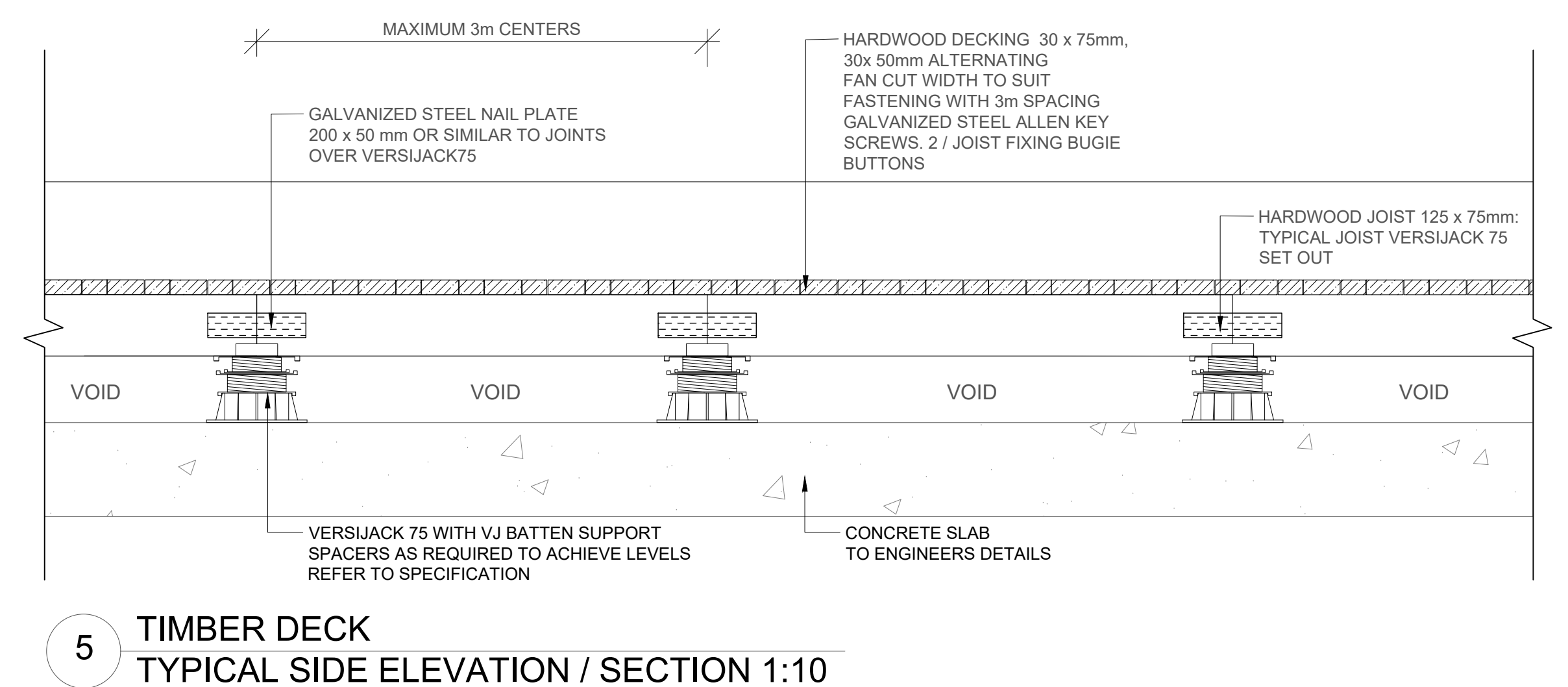


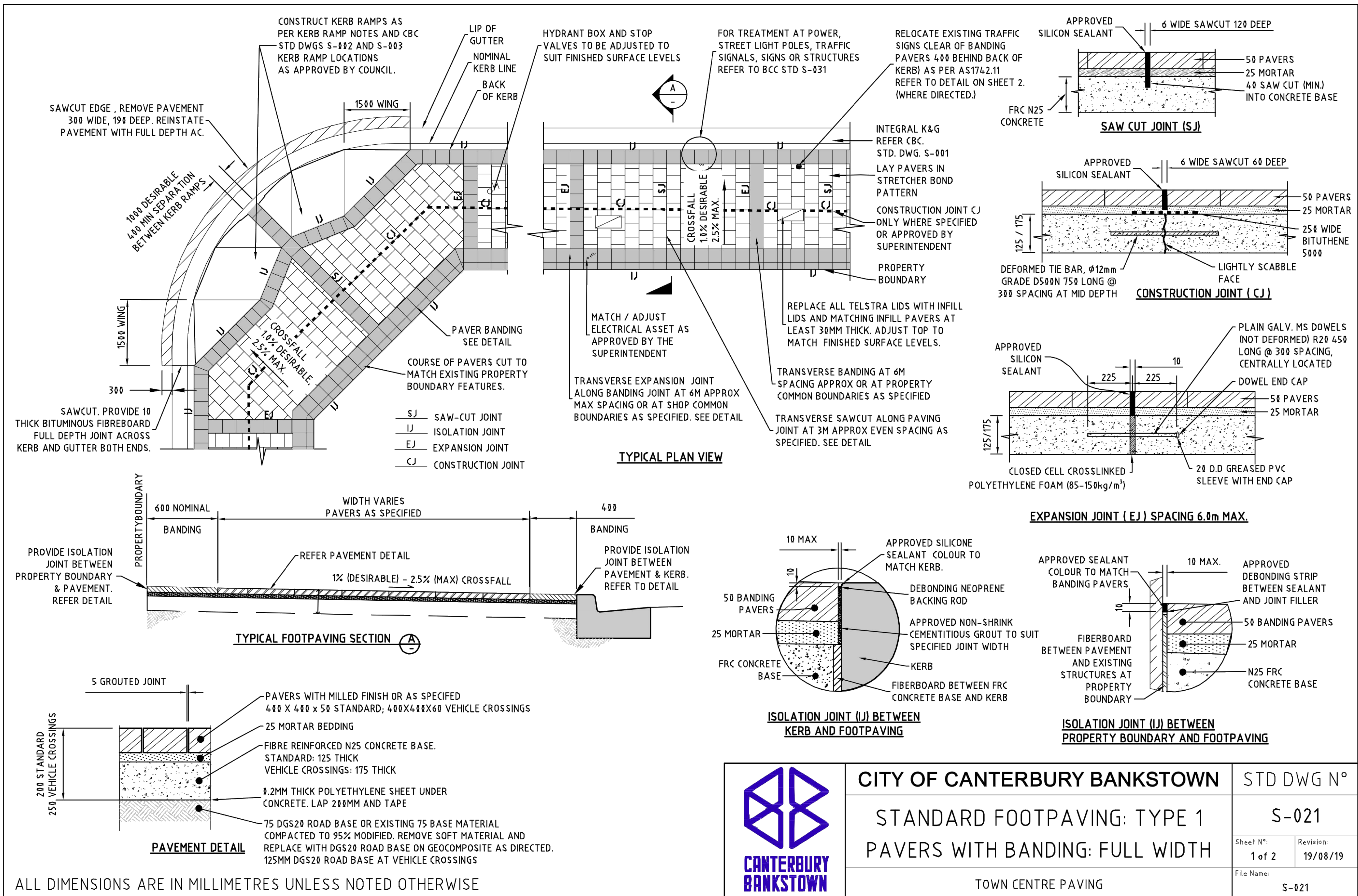
3

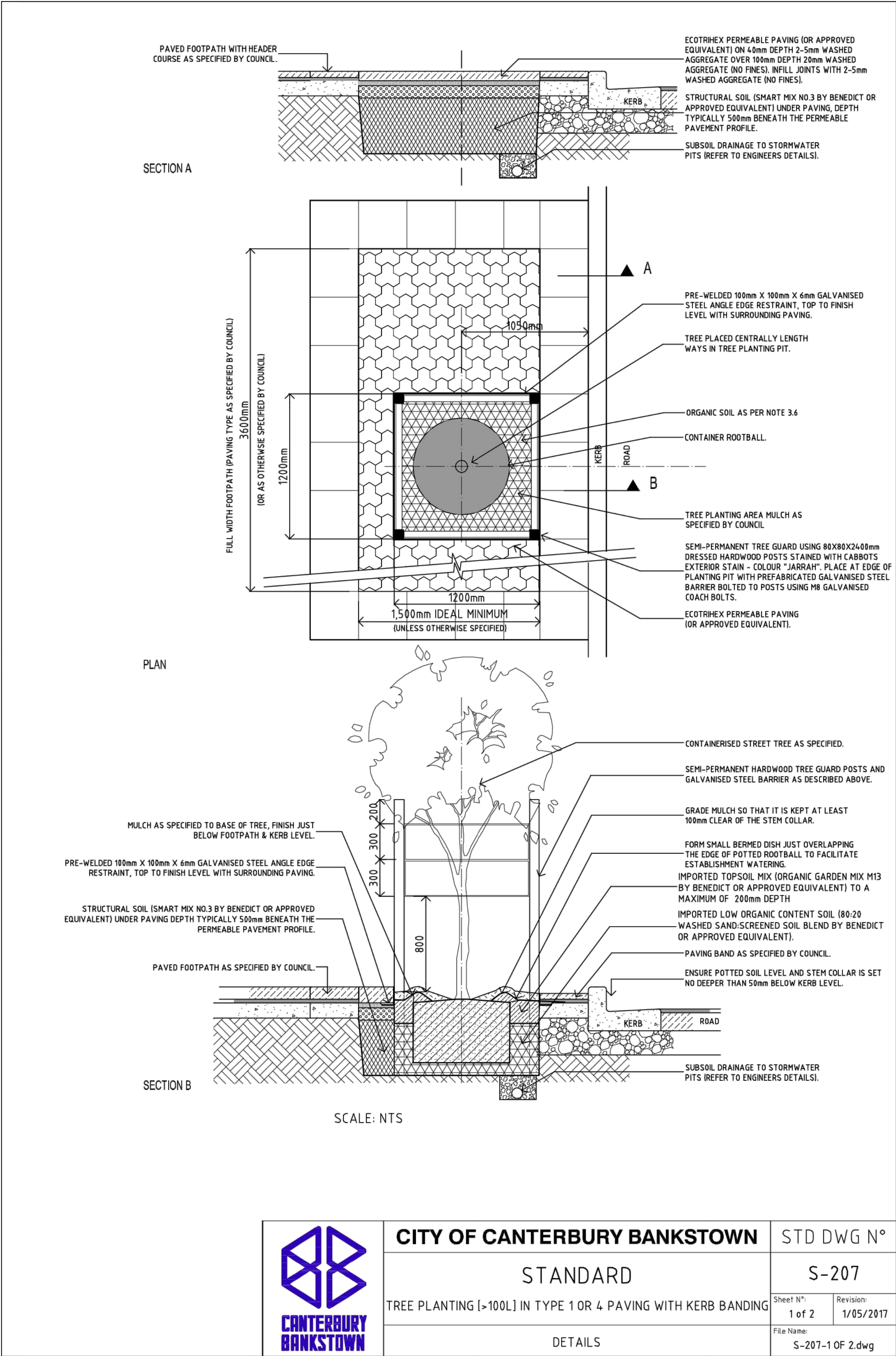
PLANTING ON SLAB
TYPICAL SECTION 1:10



GENERAL TREE SUPPLY AND QUALITY:
FOLLOW THE GUIDANCE GIVEN IN NATSPEC GUIDE: SPECIFYING TREES – A GUIDE TO ASSESSMENT OF TREE QUALITY (CLARK R. 2003).







NOTES:

1. Figured dimensions shall be taken in preference to scaling.
2. The contractor shall check all dimensions on site before commencing work.

LEGEND:

PROJECT:

280-292 Lakemba St & 62-70 King G. Rd
Wiley Park, NSW

DRAWING TITLE:

DETAILS

SCALE: 1:200@A1 CHECKED: DMT DRAWING NO: REVISION:

CREATED: 13/12/2018 JOB NO: 17-1496
DRAWN: CS DESIGNED: DMT

L11 A

CLIENT:

ABM Built

ISSUE	DESCRIPTION	DATE
A	FOR DA	14.10.2021
P1	FOR COORDINATION	01.10.2021

MAINTENANCE PROGRAM

Maintenance shall be conducted in for the lifetime of the project, this shall mean the care and maintenance of the landscape works by accepted horticultural practice including rectifying any defects that become apparent in the landscape works under normal use. Maintenance shall include, but shall not be limited to watering, mowing, fertilising, re-seeding, re-turfing, weeding, pest and disease control, staking and tying, replanting and plant replacement, cultivation, pruning, aerating, renovating, top dressing and maintaining the site in a neat and tidy condition. The following is required:

1.0 GENERAL

The Landscape Contractor shall maintain the landscape works for the term of the maintenance period to the satisfaction of the Client. The Landscape Contractor shall attend to the site on a fortnightly basis. The maintenance period shall commence at practical completion

2.0 IRRIGATION / WATERING

All subsurface drip irrigation and pop up sprinkler heads to be flushed and tested on a monthly basis. Irrigation filters, valves and zones to be reviewed and adjusted onsite to suit localised growing conditions of plant material. In excess of automatic irrigation on periodic anomalies of high temperatures, hand watering of plants may be required to ensure continuous health growth. Watering of street trees shall be carried out on a weekly basis throughout the maintenance period and modified based on weekly rainfall.

3.0 RUBBISH REMOVAL

During the term of the maintenance period the Landscape Contractor shall remove all rubbish and green waste that may accumulate through the intended use of the area and or maintenance works. This work shall be carried out at regular fortnightly intervals in order for the area to be observed in a completely clean and tidy condition.

4.0 REPLACEMENTS

The Landscape Contractor shall replace all plants that are missing, unhealthy or dead at the Landscape Contractor's cost. Replacements shall be of the same size, quality and species as the plant that has failed unless otherwise directed by the Landscape Architect. Replacements shall be made on a continuing basis not exceeding two (2) weeks after the plant has died or is seen to be missing. The landscape contractor is to report any evidence of theft or vandalism to the Landscape Architect within three (3) days of them occurring.

5.0 STAKES AND TIES

The Landscape Contractor shall install plant stakes and or tree guards as necessary or as directed by the Landscape Architect during the maintenance period to ensure the correct growing habit of plant material.

6.0 PRUNING

Trees and shrubs shall be pruned as directed by the Landscape Architect. Pruning will generally be directed to maintain the dense foliage of planting. Miscellaneous pruning methods may be carried out on the condition that they are beneficial to the condition of the plants. Any damaged growth shall be pruned. All pruned material shall be removed from the site.

7.0 MULCHED SURFACES

All mulched surfaces shall be maintained in a clean and tide condition and be reinstated if necessary to ensure the specified depth outlined in the construction details is maintained. Ensure mulch is kept clear of plant stems at all times.

8.0 PEST AND DISEASE CONTROL

The Landscape Contractor shall spray against insect and fungus infestation and all spraying shall be carried out in accordance with the manufacturer's directions. Report all instances of pests and diseases (immediately on detection) to the Landscape Architect prior to spraying.

9.0 GRASS AND TURF AREAS

The Landscape Contractor shall maintain all grass and turf areas by watering, weeding, reseeding, rolling, mowing, trimming or other operations as necessary. Apply lawn fertiliser at the completion of the first and the last mowing of each season, and at times as necessary to maintain healthy grass cover. Remove grass clippings from site. Grass and turf areas shall be sprayed with approved selective herbicide against broad leafed weeds as required by the Landscape Architect and in accordance with the manufacturer's directions. Grass and turf areas shall be kept mown to maintain a healthy and vigorous sward within the 25-50mm range.

10.0 WEED ERADICATION

Eradicate weeds by environmentally acceptable methods using a non-residual glyphosate herbicide suitable for use in residential areas, at the recommended maximum rate. Regularly remove by hand, weed growth that may occur or recur throughout grassed, planted and mulched areas. Remove weed growth from an area 1000mm diameter around the base of trees in grassed areas. Continue eradication throughout the course of the works and during the maintenance period.

11.0 SOIL SUBSIDENCE

Any soil subsidence or erosion which may occur after the soil filling and preparation operations shall be made good by the Landscape Contractor at no cost to the client.

12.0 COMPLETION

Notwithstanding anything to the contrary in the Contract, The Landscape Architect may instruct the Landscape Contractor to perform urgent maintenance works. Should the Landscape Contractor fail to carry out these works within seven (7) days of such a notice, the Principal reserves the right to employ others to carry out such works and charges costs of these works to the Landscape Contractor

13.0 FALL PROTECTION

When working at heights, landscape maintenance shall be conducted from a safe area behind a balustrade. Where this is not possible the contractors are to use safety harnesses connected to safety anchor points located at the leading edge of raised planters. The installation, maintenance and use of these anchors is to be undertaken in accordance with relevant Australian Standards, Safety in Design Reports, SWMS and WHS regulations. All green waste from elevated planters is to be bagged and removed from site via lifts .

14.0 WARRANTY

Laminated copies of the "As built" drawings are to remain on site at all times by the contractors. This documentation is to include the following:

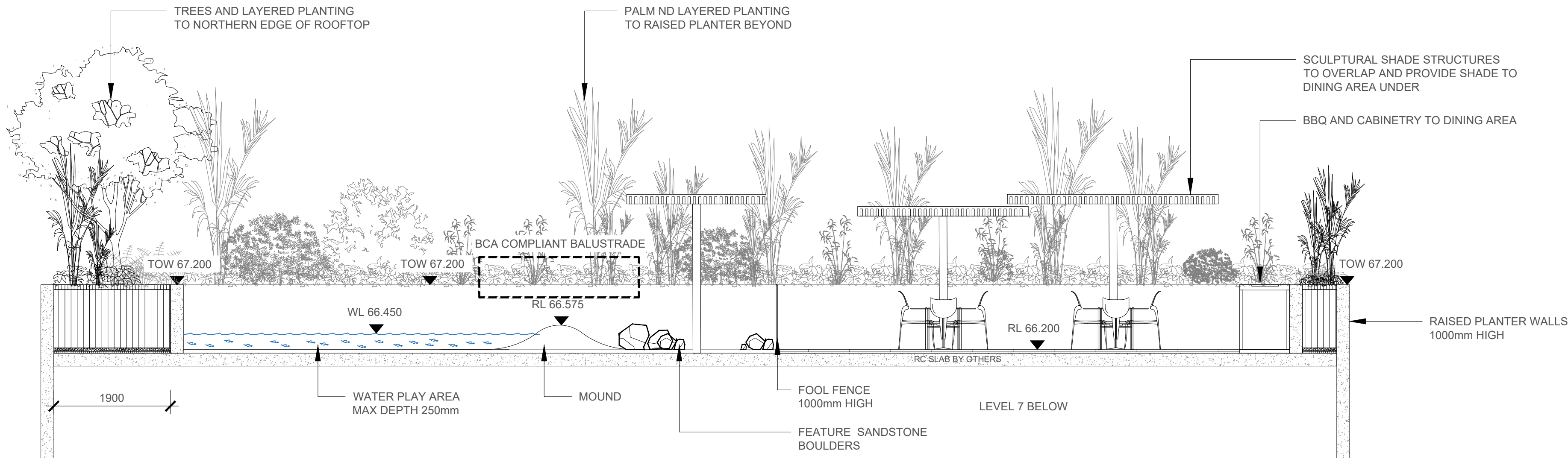
- 1. Copies of warranties and guarantees relating to all materials and plant used in construction;
- 2. Manufacturer's contact details and copies of manufacturers' typical details and specification;
- 3. Decommissioning procedures relating to the scope of landscape works.

15.0 LOG BOOK

The Landscape Contractor shall provide the client with a log book of maintenance activities undertaken within the first 24 months. The logbook shall be kept in an accessible location on site in order to be inspected as required.

The logbook shall include but not be limited to:

- Logging of date
- Activity and maintenance undertaken
- Any plant replacements
- Application of fertilizers/weed killers
- Pesticides with brand nomination and health and safety data sheet access (web address)
- Irrigation check and note any adjustments to timing



BB SECTION - SOUTHWEST
1:50

CHARACTER IMAGES

